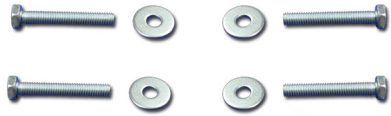


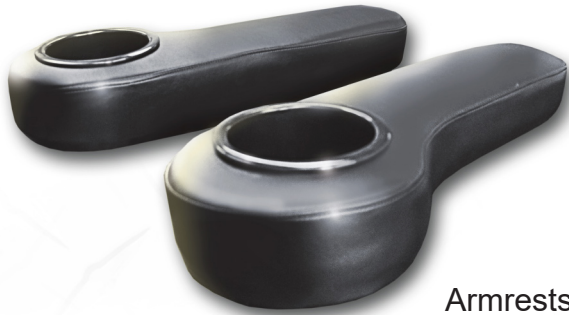


UNIVERSAL ARMRESTS INSTALLATION INSTRUCTIONS

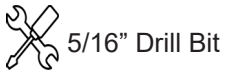
INCLUDED:



6mm Hardware



Armrests w/Cupholders



Cut out supplied templates. Find your desired mounting position on the rear seat armbars and place template as shown. Use a tape measure to ensure both templates are at the same location on opposite side.

Using a 5/16" bit, drill all the way through the armbars and clean off any left over metal debris.



Using the supplied 6mm bolts, lock washers, & flat washers secure the armrests to the rear seat.

Once both bolts are in place, then tighten.



TEMPLATE



TEMPLATE

